

# FINCHALE FLYER



ISSUE 173  
APRIL 2026

We see the magic in every child... and help make them sparkle.

## Key Dates:

### MAY

- 4th School closed for Bank Holiday
- 5th Class Photographs
- WB. 11<sup>th</sup> Y6 SATs Week
- 15<sup>th</sup> Y6 'Hoodie' Presentation Assembly (9:10am)
- 20th Evening for Parents/Carers of New Starters (5pm)
- 22<sup>nd</sup> School closes for half term holiday (3.25pm)

### JUNE

- 1st School re-opens for pupils (8.55am)
- WB. 1st Y4 Multiplication Check
- 3rd - 9<sup>th</sup> Scholastic Book Fair
- 5<sup>th</sup> Finchale Day of Reading
- WB. 8<sup>th</sup> Y1 Phonics Screening
- 12th Finchale Music Festival (9.30am - TBC)  
M&M 'Peter Pan' Production (whole-school)
- WB. 15<sup>th</sup> D&T Week
- 19<sup>th</sup> PTA Summer Fair (3.30pm) - TBC
- 24<sup>th</sup> Sports Day (1.30pm) - TBC
- WB. 29<sup>th</sup> Transition Week - details TBC

### JULY

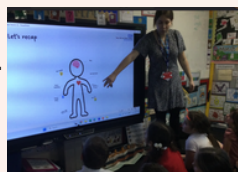
- 1st Full Governing Body Meeting
- 9th Summer Fun Run (1.30pm) / PTA Prom (TBC)
- WB. 13<sup>th</sup> End-of-Year Reports to Parents/Carers
- 14<sup>th</sup> **Brass Concert** (Mrs Mortimer's Musicians, 2.15pm)
- 16<sup>th</sup> **Y2 Ukulele Concert (9.30am)**
- 17<sup>th</sup> School closes for summer holidays (3.25pm)



All dates are subject to change.

## Piece of Mind

Maria from the Piece of Mind team has been visiting Year 2 and Year 3, this term. In Year 2, children have been learning all about their feelings, how to name them and how they might feel in our bodies. Y3 have been looking at helpful and unhelpful thoughts as part of their 'We Eat Elephants' sessions.



## Easter at Finchale

It was an egg-cellent Easter at Finchale before the holidays, with a fantastic Year 1 Easter assembly, our annual egg competition and a special visit from the Easter bunny! Thank you to our wonderful PTA and volunteers, who helped the bunny to hide eggs for the children to hunt in the memorial garden.



## Reception Farm Visit

At the end of March, our Reception Class enjoyed a visit to Hall Hill Farm. They had the opportunity to feed the animals, explore how the farm works and even go on a tractor ride! By the time they got back on the bus, many were asleep following a full and exciting day!



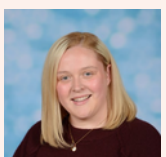
## Earth Day

In April, we have had a big focus on showing **respect** for our world, including a Climate Change assembly led by Tom from 'Young Climate Warriors'. On Earth Day (22<sup>nd</sup> April) our Eco-Team led a whole-school assembly and helped Mr. Addinall to carry out a litter pick in our school grounds, to help us look after our own small patch of earth. Thank you, eco-warriors - you did an amazing job!

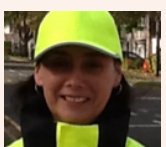


## Staffing Update

We would like to congratulate Miss Johnstone on her success in securing the position of Communication & Interaction Teacher at Epina School in South Shields from September. Miss Johnstone has been a valued teacher and SENDCo during her ten years at Finchale, developing skills that will ensure that she excels in her new role. Thank you, Miss Johnstone - the Finchale family appreciates all you have done to support our children in school and wishes you lots of luck in your new school! Governors have begun the process of recruiting a teacher for September, so that information can be shared with the school community as soon as possible regarding the school structure for next year.



We would also like to extend a heartfelt farewell to our School Crossing Patrol lady, Mrs Royle, who will leave her role at the end of this half term. We thank you, Mrs Royle, for keeping our children safe outside of school for the last six years, come rain or shine!



## Spotlight on Safeguarding - World Events

It is inevitable that children will hear about events happening around the world through the TV or social media. Talking about world events in a calm and supportive way can help children to feel safe and reassured by hearing information from a trusted adult who can correct misunderstandings they may have picked up from others. When parents and carers talk openly and calmly about world events, it helps children feel safe, supported and able to ask questions. The goal is not to give lots of detail or expose children to distressing information. Instead, it is about helping them understand the basics, reassuring them that they are safe and reminding them that many people are working hard to help. The BBC has 7 'top tips' for speaking to your child about upsetting news: <https://www.bbc.co.uk/bitesize/articles/zqkfb7h>

## Recommended Reads



Age 4-7

The Lost Homework  
Author: Richard O'Neil

Age 7+

Great Adventurers  
Author: Alastair Humphreys



### Y1/2 Adam Bushnell Author Visit

We welcomed Adam Bushnell back to Finchale on Thursday, 30<sup>th</sup> April, this time to work with Reception, Year 1 and Year 2. He covered the Y2 topic 'Titanic' and 'Kings and Queens' in Y1, helping us to plan and create some fantastic setting descriptions and stories, ready for our writing, next week. He finished the day with some storytime in Reception.



### Y5 Alice in Wonderland Assembly

Year 5 led us down the rabbit hole and introduced us to the world of Alice in Wonderland with their class assembly on 24<sup>th</sup> April. They showcased their knowledge about the art inspired by Lewis Carroll's masterpiece, from poetry to surreal paintings and musical pieces. They used this art to demonstrate their own creativity, producing fantastic blackout poetry, compositions with glockenspiels and art work. Your knowledge and talent was impressive, Year 5!



### Y3 & 4 End Zone and Y3 Tennis

The warmer weather has allowed us to venture outdoors for an increasing number of sporting activities, as we start the Summer Term. On 27<sup>th</sup> April, Year 3 and Year 4 took part in End Zone sessions. They had lots of fun with Darren from the School Sports Partnership, learning how to work as a team, pass successfully and defend the goal area or 'end zone'. Y3 also had the opportunity to attend a tennis festival on 30<sup>th</sup> April, where they developed lots of different skills as they worked their way around the carousel of activities.



### April Attendance

Reception	97.65%
Year 1	95.29%
Year 2	97.4%
Year 3	99.39%
Year 4	98.03%
Year 5	97.51%
Year 6	92.73%
Whole School	<b>96.87%</b>

### Musician of the Month



Our Musician of the Month for April was Bessie Smith. Bessie Smith was an influential African-American blues singer in the 1920s and 1930s. Known as the "Empress of the Blues," her powerful voice and emotive performances made her a seminal figure in blues and jazz music.



Many thanks, as always, for your support.  
Miss Ward.